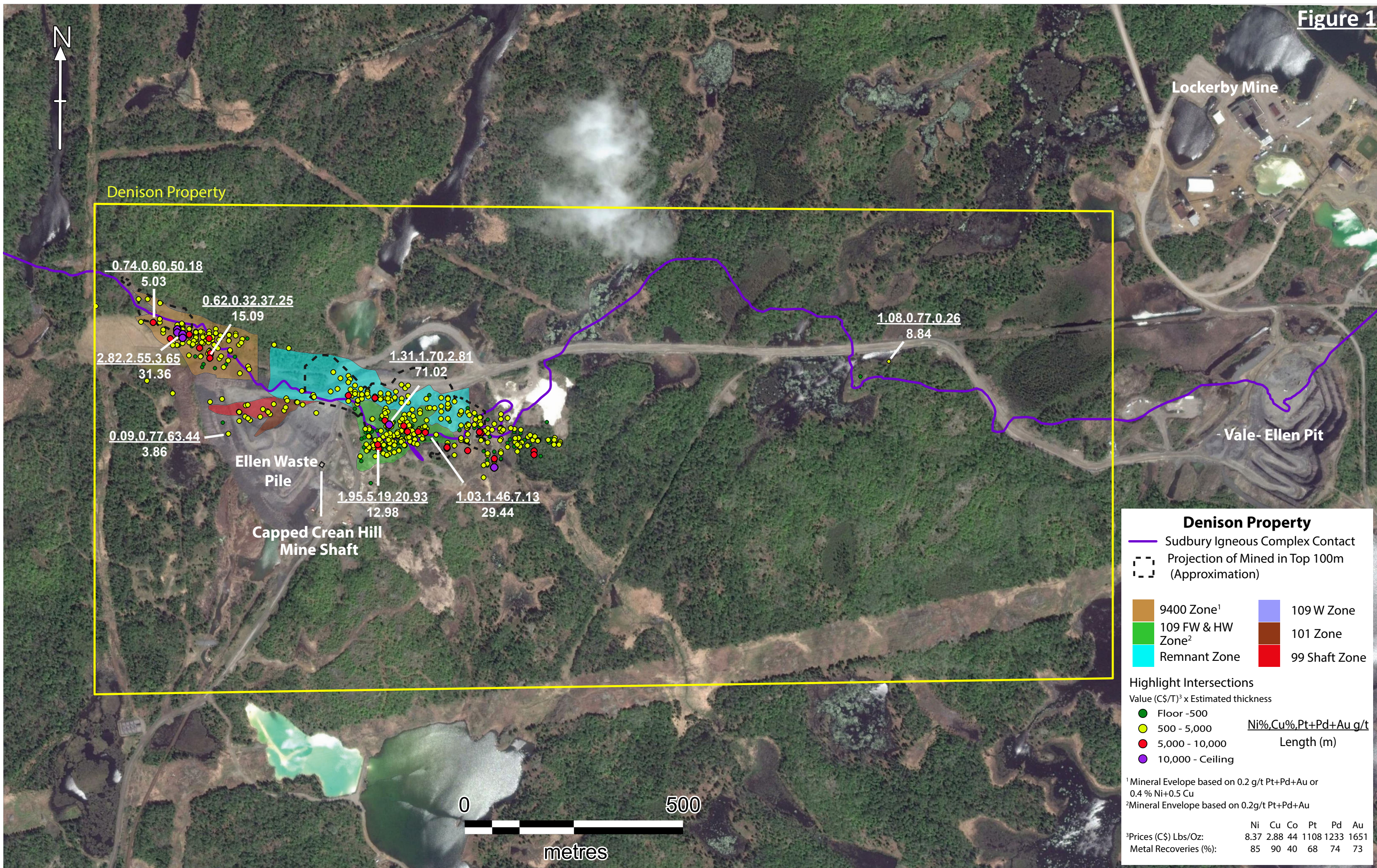


Figure 1



Denison Property

Lockerby Mine

Vale- Ellen Pit

Ellen Waste Pile

Capped Crean Hill Mine Shaft

0.74, 0.60, 50.18

5.03

0.62, 0.32, 37.25

15.09

2.82, 2.55, 3.65

31.36

1.31, 1.70, 2.81

71.02

1.08, 0.77, 0.26

8.84

0.09, 0.77, 63.44

3.86

1.95, 5.19, 20.93

12.98

1.03, 1.46, 7.13

29.44

Denison Property

- Sudbury Igneous Complex Contact
- Projection of Mined in Top 100m (Approximation)

- | | |
|--|--|
| 9400 Zone ¹ | 109 W Zone |
| 109 FW & HW Zone ² | 101 Zone |
| Remnant Zone | 99 Shaft Zone |

Highlight Intersections

- Value (CS/T)³ x Estimated thickness
- Floor -500
 - 500 - 5,000
 - 5,000 - 10,000
 - 10,000 - Ceiling
- Ni%, Cu%, Pt+Pd+Au g/t
Length (m)

¹ Mineral Envelope based on 0.2 g/t Pt+Pd+Au or 0.4 % Ni+0.5 Cu
² Mineral Envelope based on 0.2g/t Pt+Pd+Au

	Ni	Cu	Co	Pt	Pd	Au
³ Prices (CS) Lbs/Oz:	8.37	2.88	44	1108	1233	1651
Metal Recoveries (%):	85	90	40	68	74	73

